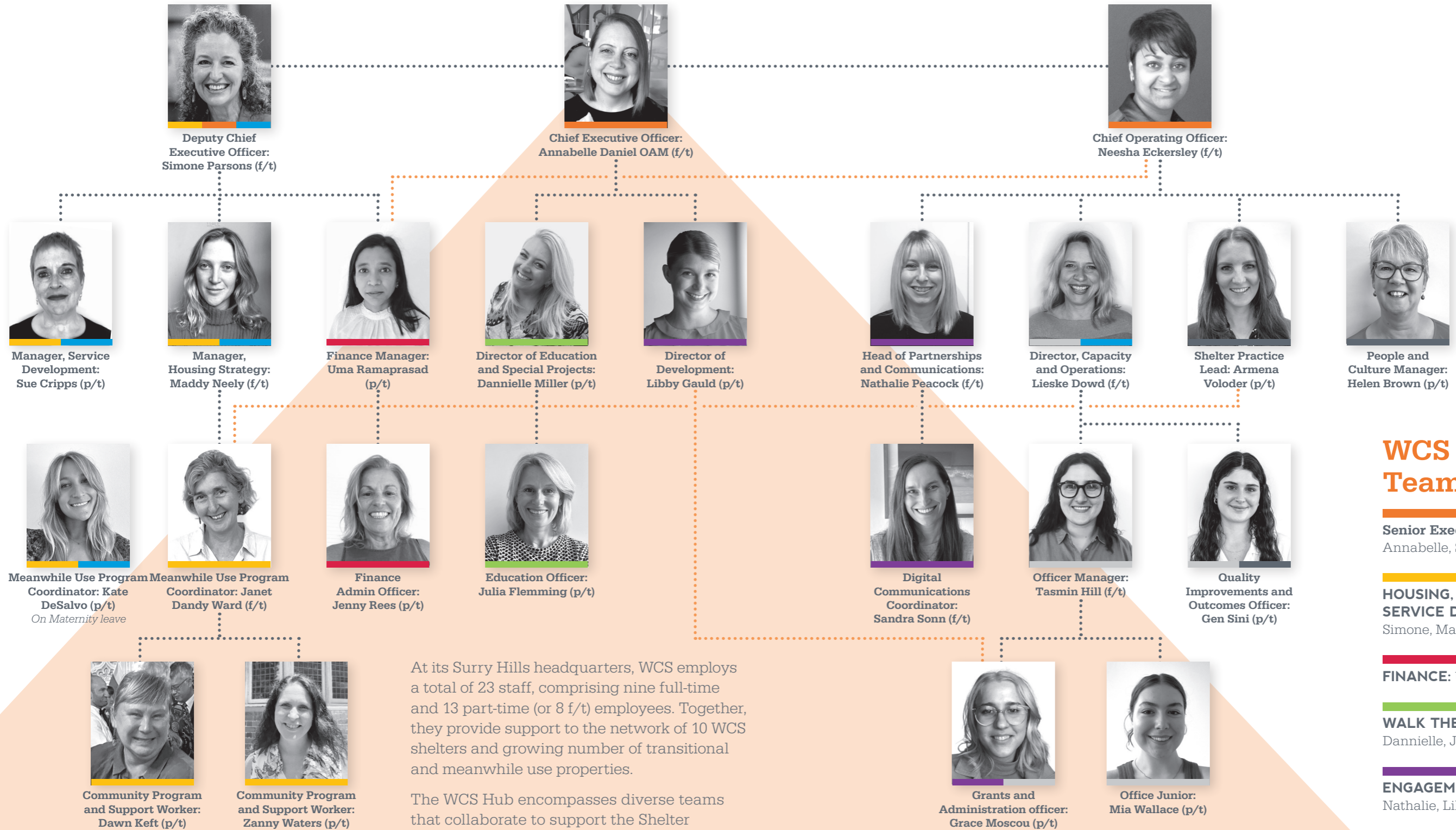


# WCS Hub Staff



At its Surry Hills headquarters, WCS employs a total of 23 staff, comprising nine full-time and 13 part-time (or 8 f/t) employees. Together, they provide support to the network of 10 WCS shelters and growing number of transitional and meanwhile use properties.

The WCS Hub encompasses diverse teams that collaborate to support the Shelter Network and transitional properties.

Several Hub staff members serve across various teams that have been established to assist with shelter operations, policy formulation, housing, communications, fundraising and finance.

## WCS Hub Teams

**Senior Executive:** Annabelle, Simone, Neesha

**HOUSING, INNOVATION AND SERVICE DEVELOPMENT:** Simone, Maddy, Janet, Sue, Kate

**FINANCE:** Uma, Jenny

**WALK THE TALK TEAM:** Dannielle, Julia

**ENGAGEMENT TEAM:** Nathalie, Libby, Sandra

**ADMIN TEAM:** Lieske, Tasmin, Grace, Gen, Mia

**PRACTICE TEAM:** Sue, Lieske, Kate, Simone, Maddy